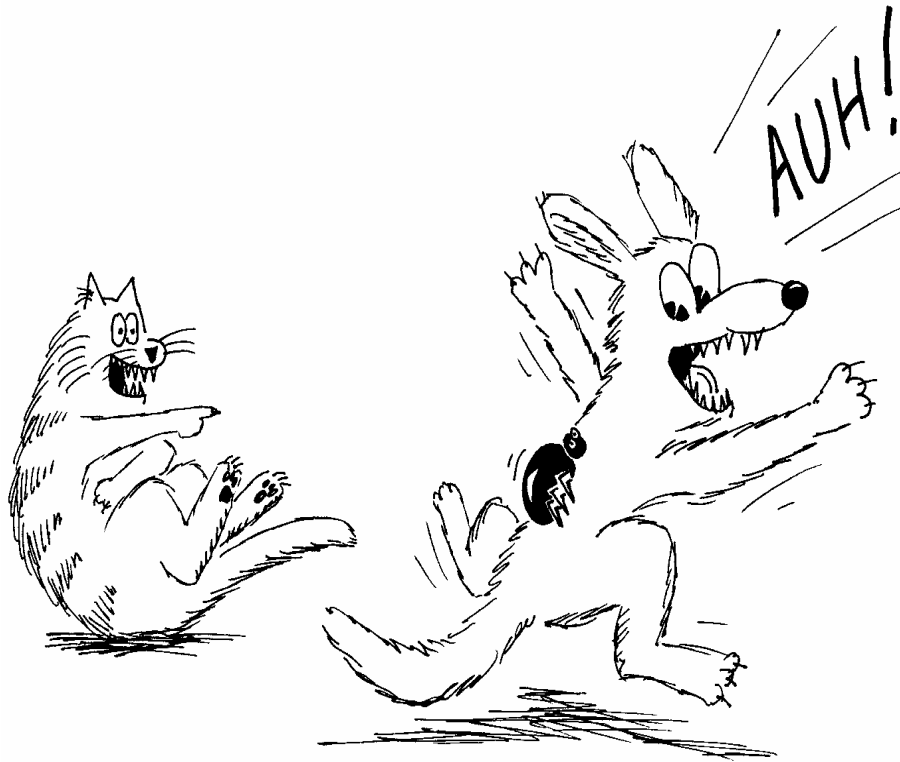


EMPHATIC

(em FAT ik) *adj.*
forcibly expressive

Link: **FAT TICK**



*“Rex became **EMPHATIC** when he saw a **FAT TICK** on his back.”*

-
- ❑ The scientist was **EMPHATIC** that no flammable materials be brought to the test site.
 - ❑ My mom **EMPHATICALLY** told me to be home by midnight.
 - ❑ The sign **EMPHATICALLY** warned visitors to keep their hands out of the cage.

ENHANCE

(en HANS) v.
to improve; to intensify

Link: **DANCE**



*"The band thought new speakers would
ENHANCE the **DANCE** music."*

-
- ❑ Sheila believed applying a lot of makeup would **ENHANCE** her looks; when in reality it made her look like a clown.
 - ❑ Bob **ENHANCED** his race car's performance by installing a more powerful engine.
 - ❑ Since **ENHANCING** my computer's modem, I am able to do research more quickly.

ENMITY

(EN mi tee) *n.*

hostility; deep-seated hatred

Link: **IN MY TEA**



*“Sir Howard, I have great **ENMITY** for your dog’s tongue **IN MY TEA.**”*

-
- ❑ The **ENMITY** between the teams was apparent to the spectators.
 - ❑ When she saw his new girlfriend, it was not easy to disguise her **ENMITY**.
 - ❑ The **ENMITY** between the feuding families is very obvious in the book.
-

ESCAPADE

(ES kah payd) *n.*

an adventurous unconventional act

Link: **ICE CAPADES**



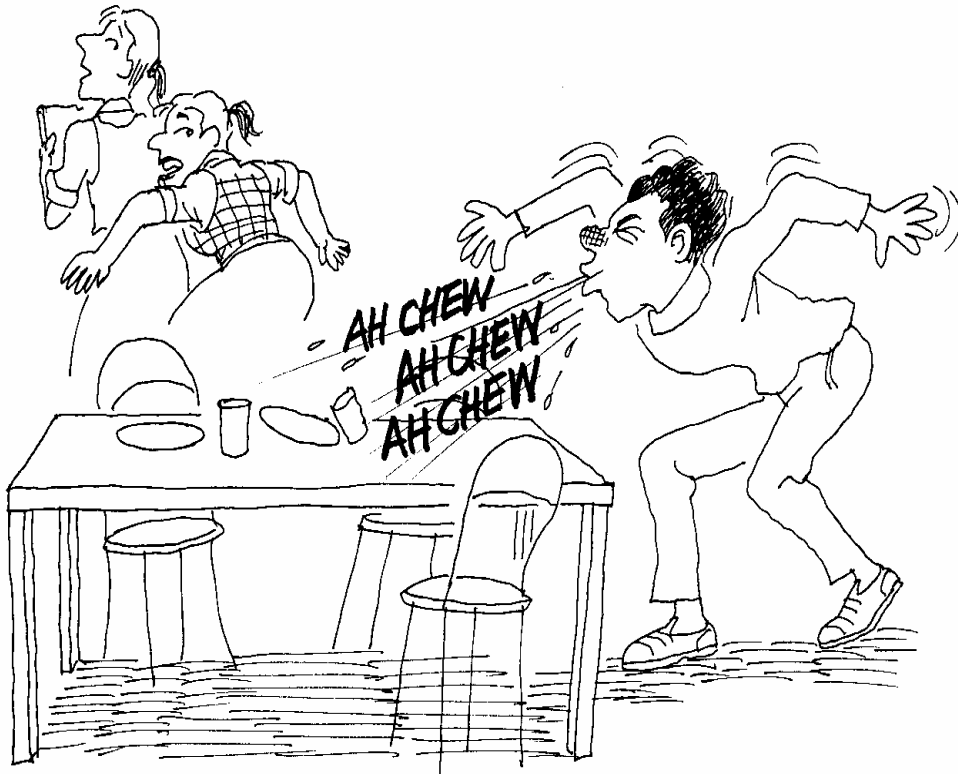
*“An **ESCAPADE** at the **ICE CAPADES**”*

-
- ❑ Mary’s **ESCAPADE** was harmless, but it caused her parents some concern.
 - ❑ Joe and Alan’s **ESCAPADE** at the beach during Spring Break is one they will never forget.
 - ❑ Hiking in the Rockies was our most recent family **ESCAPADE**.

ESCHEW

(es CHOO) v.
to avoid or shun

Link: **AH CHEW**



*"It is a good policy to **ESCHEW** all **AH CHEWS!**"*

-
- We were advised to **ESCHEW** riding the subway at night.
 - The doctor told Danny to **ESCHEW** the sun's dangerous rays by applying sunscreen whenever he went outside.
 - Sally **ESCHEWS** anyone who uses bad language.

ESPOUSE

(eh SPOWZ) v.
to adopt; to support

Link: **SPOUSE**



*"Harold's **SPOUSE ESPOUSED** a large family."*

-
- I **ESPOUSE** the idea that we eat dessert before dinner.
 - The candidate for governor **ESPOUSED** a one-cent sales tax to build a new stadium.
 - Because Barbara was always ready to **ESPOUSE** students' privileges, she was elected senior class president.

ESTRANGE

(eh STRAINJ) v.

to alienate; to treat as a stranger;
to turn an affectionate attitude into
an indifferent or unfriendly one

Link: **STRANGE**



*“Nancy became **ESTRANGED** from her husband because he was so **STRANGE**.”*

-
- ❑ Lawrence feared his candid views of the company would **ESTRANGE** him from his coworkers.
 - ❑ Hardly recognizing anyone, Ed felt **ESTRANGED** from his old high school classmates during his 25th reunion.
 - ❑ The governor stated that capital punishment does not deter crime, and in so doing **ESTRANGED** himself from many of his erstwhile supporters.

ETHEREAL

(i THEER ee ul) *adj.*

very light; airy; delicate; heavenly

Link: **CEREAL**



“ETHEREAL CEREAL”

-
- ❑ An **ETHEREAL** mist covered the hill in the morning.
 - ❑ The **ETHEREAL** scent of freshly baked apple pie permeated the kitchen.
 - ❑ Elizabeth had the singing voice of an **ETHEREAL** angel.
-

EVINCE

(ih VINCE) v.

to show or demonstrate clearly

Link: **EVENTS**



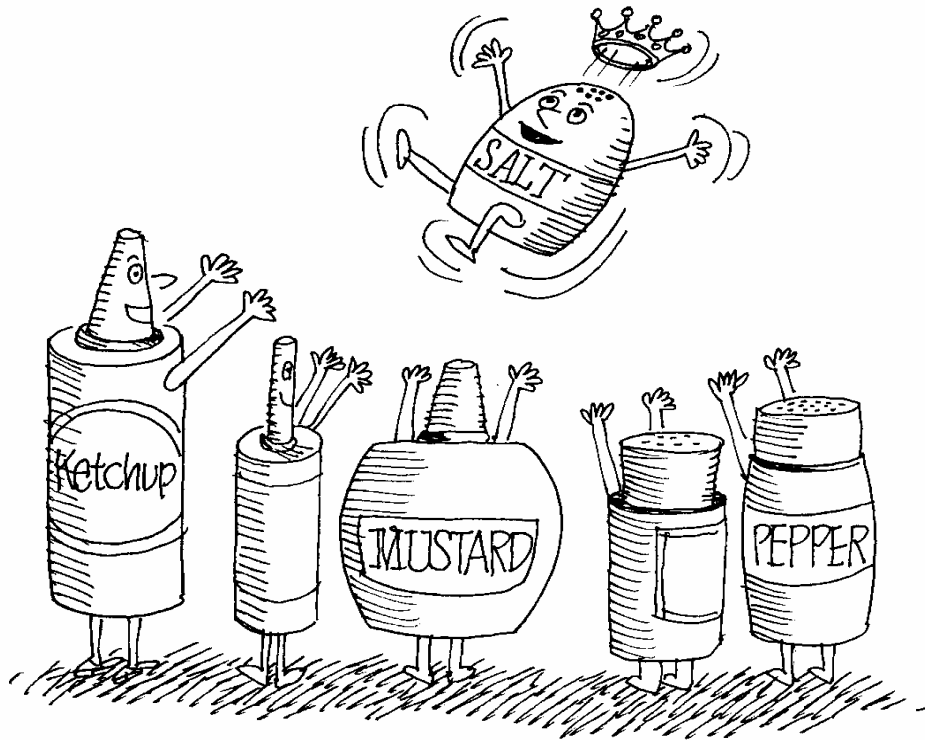
*“EVENTS soon would **EVINCE**
Tom’s short-sightedness.”*

-
- ❑ The prince wished to **EVINCE** his love for the fair maiden.
 - ❑ The new billboard **EVINCED** our sales message.
 - ❑ Ed spent hours **EVINCING** the perfect technique of throwing the shot putt.

EXALT

(ig ZAWLT) v.
to raise high; glorify

Link: **SALT**



*“Everyone **EXALTED** the **SALT** as
king of the condiments.”*

-
- ❑ The fireman was **EXALTED** by the press for saving the child from a burning building.
 - ❑ Elizabeth felt **EXALTED** when she scored 1600 on her SAT.
 - ❑ Our society tends to **EXALT** actors and sport stars rather than teachers and professors.
-

Name _____ Date _____

VOCABULARY CARTOONS II: Review #12.1

Match the word with its definition.

- | | |
|-------------------------|-----------------------------------|
| ___ 1. emphatic | a. to alienate |
| ___ 2. enhance | b. an adventurous act |
| ___ 3. enmity | c. to adopt; to support |
| ___ 4. escapade | d. hostility; deep-seated hatred |
| ___ 5. eschew | e. to show or demonstrate clearly |
| ___ 6. espouse | f. to raise high; glorify |
| ___ 7. estrangle | g. to avoid or shun |
| ___ 8. ethereal | h. very light; airy; delicate |
| ___ 9. evinced | i. forcibly expressive |
| ___ 10. exalt | j. to improve; to intensify |

Fill in the blanks with the appropriate word.

1. An _____ mist covered the hill in the morning.
2. The _____ between the teams was apparent to the spectators.
3. We were advised to _____ riding the subway at night.
4. Sheila believed applying a lot of makeup would _____ her looks; when in reality it made her look like a clown.
5. Hiking in the Rockies was our most recent family _____.
6. Hardly recognizing anyone, Ed felt _____ from his old high school classmates during his 25th reunion.
7. The scientist was _____ that no flammable materials be brought to the test site.
8. The fireman was _____ by the press for saving the child from a burning building.
9. The candidate for governor _____ a one-cent sales tax to build a new stadium.
10. The prince wished to _____ his love for the fair maiden.

Name _____ Date _____

VOCABULARY CARTOONS II: Review #12.2

Multiple Choice: Circle the appropriate word for the provided definition.

1. to show or demonstrate clearly
 - a.) enhance
 - b.) espouse
 - c.) evince
 - d.) eschew
2. to avoid or shun
 - a.) emphatic
 - b.) espouse
 - c.) evince
 - d.) eschew
3. forcibly expressive
 - a.) emphatic
 - b.) espouse
 - c.) enhance
 - d.) eschew
4. to make clear and explain fully
 - a.) ethereal
 - b.) espouse
 - c.) elucidate
 - d.) elocution
5. to adopt; to support
 - a.) ebullience
 - b.) espouse
 - c.) elucidate
 - d.) enmity
6. hostility; deep-seated hatred
 - a.) estrange
 - b.) espouse
 - c.) exalt
 - d.) enmity
7. the art of public speaking
 - a.) escapade
 - b.) espouse
 - c.) exalt
 - d.) elocution
8. enthusiastic; bubbling with excitement
 - a.) ebullience
 - b.) emphatic
 - c.) exalt
 - d.) eschew
9. to improve; to intensify
 - a.) emphatic
 - b.) ethereal
 - c.) enhance
 - d.) eschew
10. very light; airy; delicate; heavenly
 - a.) eloquent
 - b.) ethereal
 - c.) enmity
 - d.) elite
11. extremely expressive in speech, writing, or movement
 - a.) eloquent
 - b.) ethereal
 - c.) elucidate
 - d.) emphatic
12. to raise high; glorify
 - a.) egg
 - b.) elite
 - c.) exalt
 - d.) eschew
13. to alienate; to treat as a stranger
 - a.) espouse
 - b.) evince
 - c.) escapade
 - d.) estrange
14. to involve in argument or hostile action
 - a.) ethereal
 - b.) embroil
 - c.) evince
 - d.) espouse
15. an adventurous unconventional act
 - a.) espouse
 - b.) enmity
 - c.) escapade
 - d.) estrange

Name _____ Date _____

VOCABULARY CARTOONS II: Review 9 thru 12

Multiple Choice: Circle the appropriate word for the provided definition.

1. severe; gloomy; stern
 - a.) deprecate
 - b.) dour
 - c.) dishevel
 - d.) ebullience
2. extreme wickedness
 - a.) dogmatic
 - b.) emphatic
 - c.) depravity
 - d.) ebullience
3. to avoid or shun
 - a.) eschew
 - b.) espouse
 - c.) dwell
 - d.) deploy
4. enlighten; instruct
 - a.) diminution
 - b.) ebullience
 - c.) edification
 - d.) eschew
5. a stupid person
 - a.) diffident
 - b.) elucidate
 - c.) despot
 - d.) dolt
6. sorrowful; melancholy
 - a.) doleful
 - b.) dwell
 - c.) devoid
 - d.) disconcert
7. a bitter verbal attack
 - a.) eloquent
 - b.) diatribe
 - c.) elucidate
 - d.) evince
8. enthusiastic; bubbling with excitement
 - a.) enhance
 - b.) eminent
 - c.) ebullience
 - d.) elucidate
9. to express disapproval of
 - a.) elocution
 - b.) depravity
 - c.) deprecate
 - d.) evince
10. to take off; to remove; to put aside
 - a.) devoid
 - b.) don
 - c.) doff
 - d.) deploy
11. hostility; deep-seated hatred
 - a.) deter
 - b.) deprecate
 - c.) emphatic
 - d.) enmity
12. enthusiastic; bubbling with excitement
 - a.) dogmatic
 - b.) ebullience
 - c.) eloquent
 - d.) elite
13. the act or process of diminishing;
reduction
 - a.) devoid
 - b.) deter
 - c.) depravity
 - d.) diminution
14. to involve in argument or hostile action;
to throw in disorder
 - a.) deploy
 - b.) embroil
 - c.) emphatic
 - d.) ebullience
15. very light; airy; delicate; heavenly
 - a.) diffident
 - b.) eloquent
 - c.) ethereal
 - d.) ebullience

VOCABULARY CARTOONS II, SAT Word Power
Review Answers

Review #12.1

Matching:

1. i
2. j
3. d
4. b
5. g
6. c
7. a
8. h
9. e
10. f

Fill in the Blank:

1. ethereal
2. enmity
3. eschew
4. enhance
5. escapade
6. estranged
7. emphatic
8. exalted
9. espoused
10. evince

Review #12.2

Multiple Choice:

- | | |
|-------------------|------------------|
| 1. c.) evince | 11. a.) eloquent |
| 2. d.) eschew | 12. c.) exalt |
| 3. a.) emphatic | 13. d.) estrange |
| 4. c.) elucidate | 14. b.) embroil |
| 5. b.) espouse | 15. c.) escapade |
| 6. d.) enmity | |
| 7. d.) elocution | |
| 8. a.) ebullience | |
| 9. c.) enhance | |
| 10. b.) ethereal | |

Review 9-12

Multiple Choice:

- | | |
|--------------------|--------------------|
| 1. b.) dour | 11. d.) enmity |
| 2. c.) depravity | 12. b.) ebullience |
| 3. a.) eschew | 13. d.) diminution |
| 4. c.) edification | 14. b.) embroil |
| 5. d.) dolt | 15. c.) ethereal |
| 6. a.) doleful | |
| 7. b.) diatribe | |
| 8. d.) elucidate | |
| 9. c.) deprecate | |
| 10. c.) doff | |